

HESS & HESS CPA's, P.A.
CERTIFIED PUBLIC ACCOUNTANTS

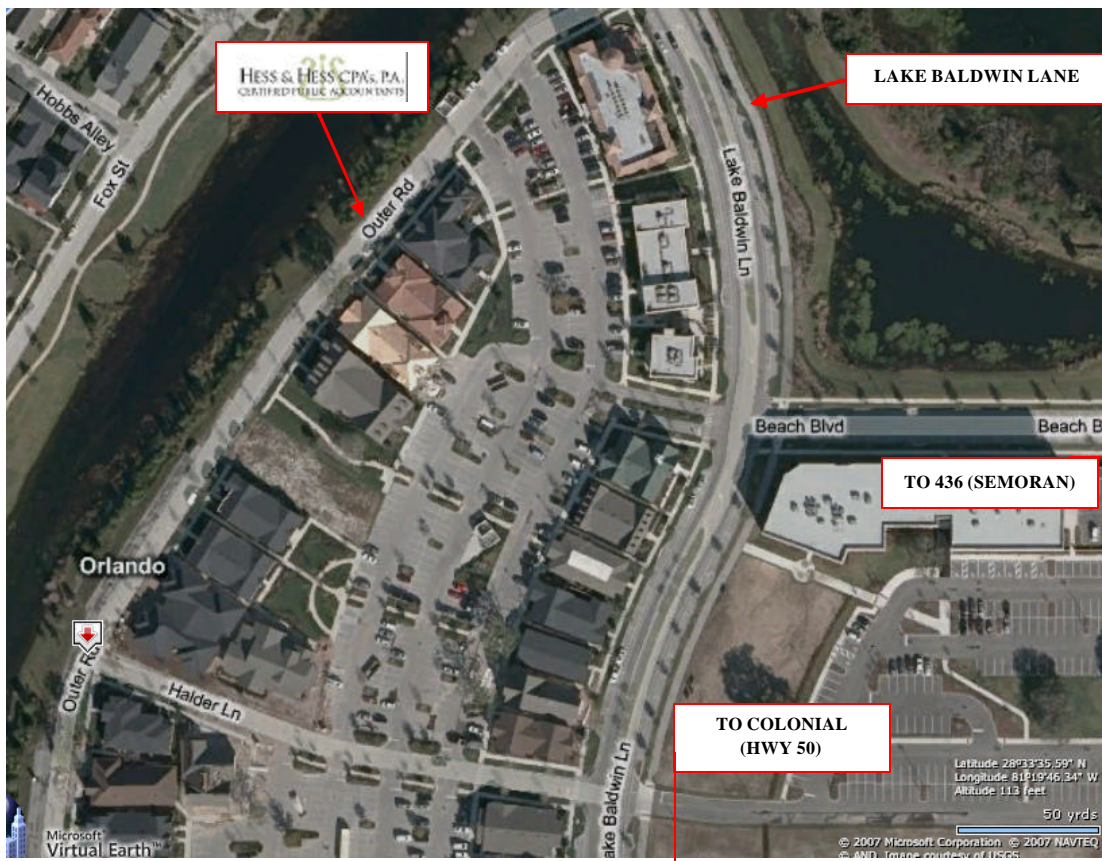
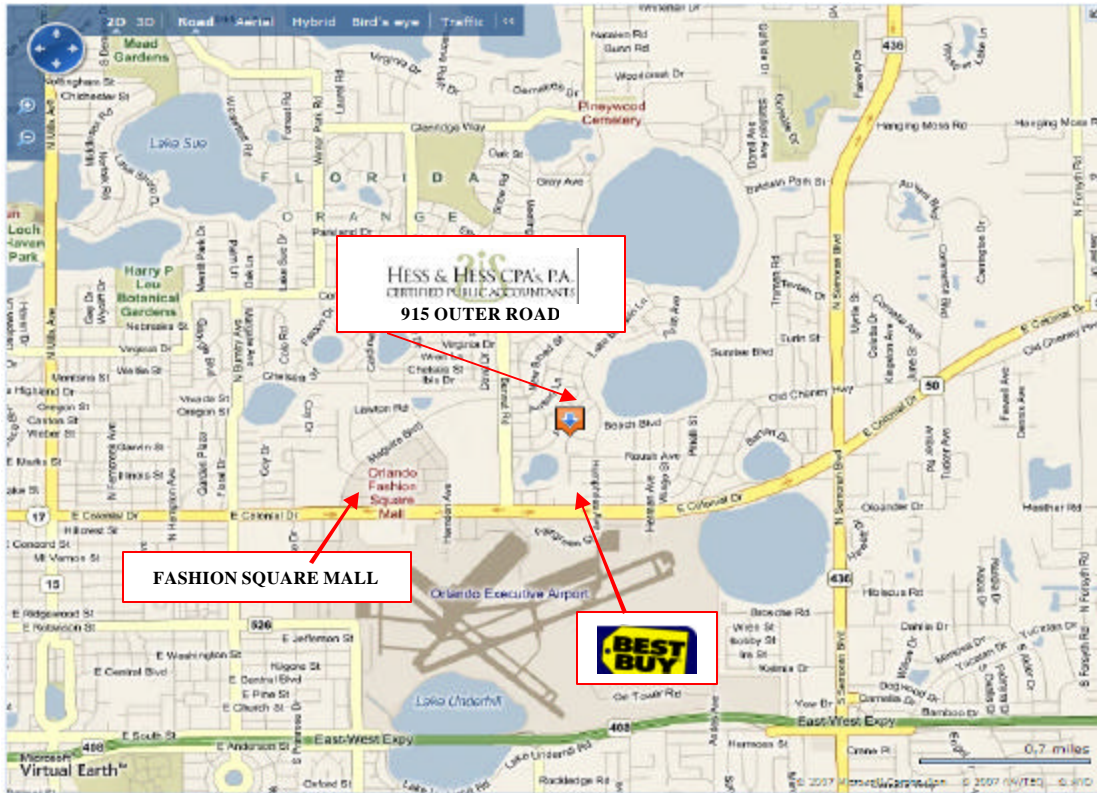
At Baldwin Park



915 OUTER ROAD - SUITE 100 - ORLANDO, FL 32814 - 407-770-1815

The distinctive towers located at the front and rear of our building makes it easy to identify when you arrive at the neighborhood office park in Baldwin Park. Our offices face the water; parking is available at the front and is abundant behind the building. Below you will find graphic and narrative format instructions.

915 OUTER ROAD . SUITE 100 . ORLANDO , FL 32814
www.HessAccounting.com . 407-770-1815



From Winter Park

- Proceed **SOUTH** on **LAKEMONT** .
- **FOLLOW LAKEMONT** into Baldwin Park.
- CONTINUE on **LAKEMONT** until it ends at **COMMON WAY**.
- **TURN LEFT** on **COMMON WAY**.
- **TURN RIGHT** on **LK BALDWIN LN**.
- **TURN RIGHT** on **OUTER ROAD**.
- HESS & HESS CPA's, P.A. is the 3rd building on the left.

From Downtown Orlando

- Proceed **EAST** on **COLONIAL Drive / SR 50**.
- Turn **LEFT** at **LAKE BALDWIN LANE** (the next traffic light after Bennett Road – Just past Fashion Square Mall).
- Proceed **STRAIGHT** until you see a Brick Monument Entrance sign on your left with the Words “Baldwin Park”.
- Turn **LEFT** at **OUTER ROAD**.
- HESS & HESS CPA's, P.A. is the 3rd building on the left.

From Orlando Airport

- Proceed **North** on **SR 436**, Semoran Blvd.
- Turn **LEFT** at **COLONIAL Drive / SR 50**.
- Turn **RIGHT** onto **LAKE BALDWIN LANE** (traffic light).
- Proceed straight until you see a Brick Monument Entrance sign on your left with the Words “Baldwin Park”.
- Turn **LEFT** at **OUTER ROAD**.
- HESS & HESS CPA's, P.A. is the 3rd building on the left.

From North 436 (Semoran Blvd.)

- Proceed **SOUTH** on **SR 436**, Semoran Blvd.
- **TURN RIGHT** on **OLD CHENEY** (traffic light).
- Proceed down **OLD CHENEY** and **VERE RIGHT** at **BEACH**.
- **BEACH STREET** dead ends into our rear parking lot.
- Notice the rear of our building straight ahead and park.
- Follow the sidewalk around to the front of our building at waterside.

From Disney

- Proceed **EAST** on **I-4** and **EXIT** at **COLONIAL DR / SR 50**.
- **TURN RIGHT (EAST)** onto **COLONIAL DR / SR 50**.
- Turn **LEFT** at **LAKE BALDWIN LANE** (the next traffic light after Bennett Road – just past Fashion Square Mall).
- Proceed **STRAIGHT** into **BALDWIN PARK**.
- Turn **LEFT** at **OUTER ROAD**.
- HESS & HESS CPA's, P.A. is the 3rd building on the left.

From Daytona

- Proceed west on **I-4 WEST, EXIT#85** at **PRINCETON**.
- **TURN LEFT** onto **PRINCETON**.
- Princeton dead ends into 17-92 (Mills Avenue).
- **TURN RIGHT** onto **17-92** (Mills Avenue).
- Proceed to **VIRGINIA** (traffic light) and turn left.
- Follow Virginia through all the “S” curves. After you go through the “S” curves, **Virginia becomes Corrine**.
- Continue on **CORINE**. Go through the intersection with the traffic light for Bennett Road. **DO NOT TURN ONTO BENNETT**.
- **TURN RIGHT** onto **COMMON WAY** (the 1st street on right after Bennett).
- **COMMON WAY** ends at **LK BALDWIN LN**
- **TURN RIGHT** onto **LK BALDWIN LN**.
- Proceed to **OUTER ROAD** and **TURN RIGHT**.
- HESS & HESS CPA's, P.A. is the 3rd building on the left.

You are welcome to find parking out front or you may use the large parking lot located at the rear of our building and just follow the sidewalk around our building to the waterside.

**For further assistance please call us
407-770-1815**